

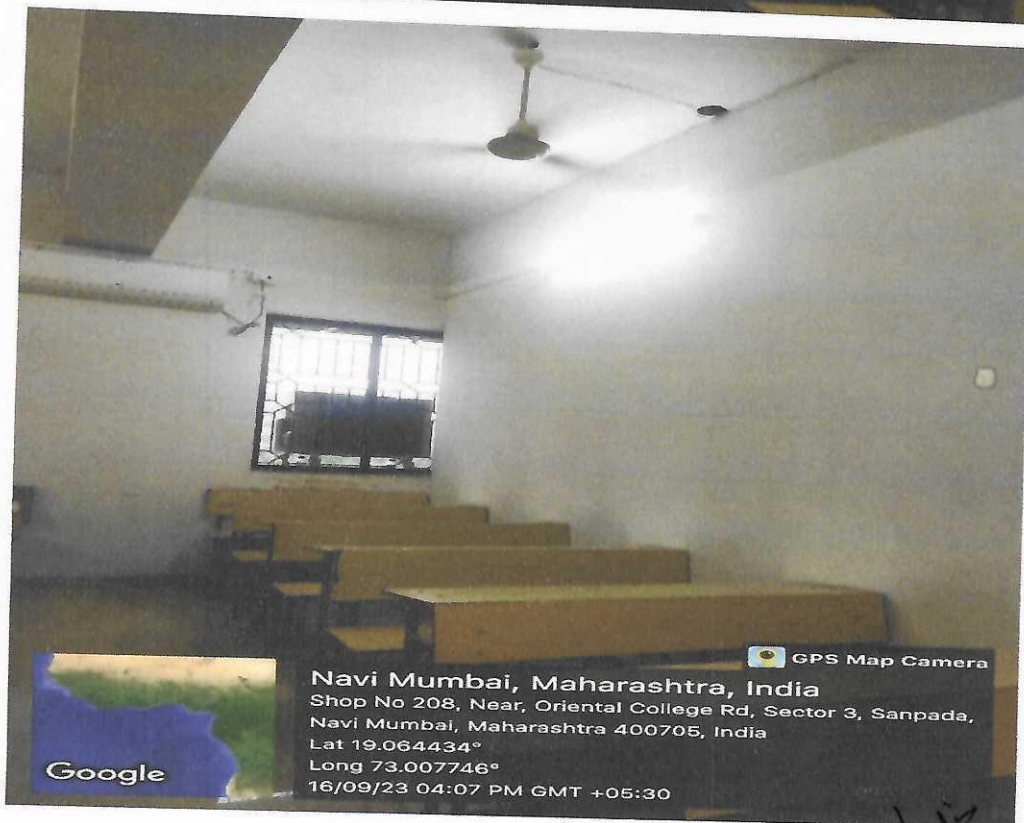
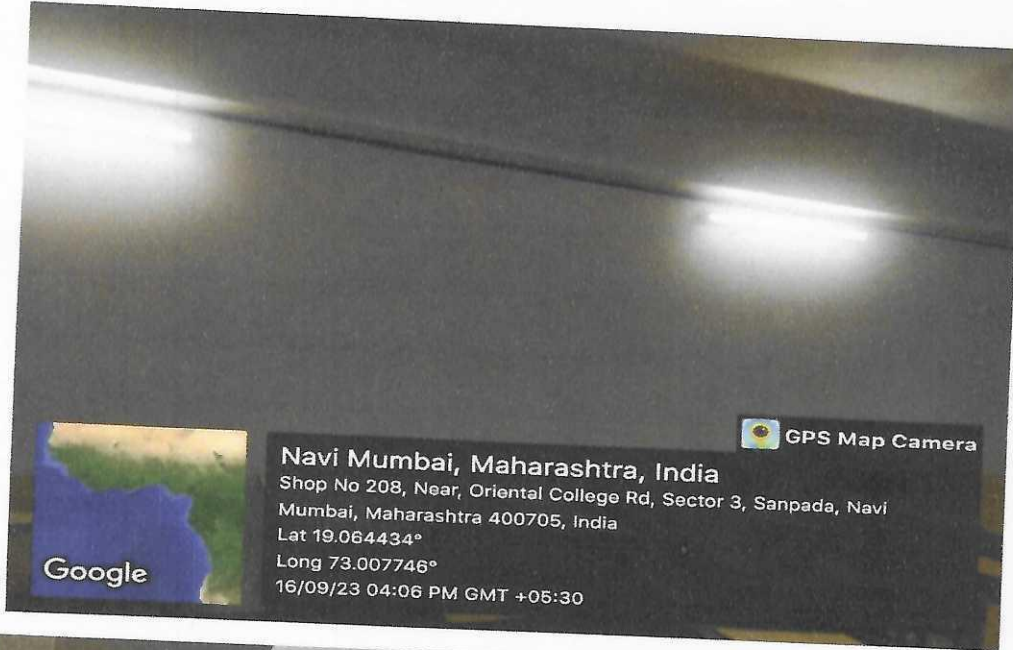
ORIENTAL COLLEGE OF LAW

MANAGED BY ORIENTAL EDUCATION SOCIETY

(Affiliated to University of Mumbai and Approved by Bar Council of India)
Aff-I/ICD/2014-15/1959- Bar Council: BCI: D: 793/2014 (L.E.)

❖ Geo tagged photographs with caption of facilities

- LED Tube lights in Classrooms



[Signature]
PRINCIPAL
ORIENTAL COLLEGE OF LAW
Plot No. 3,4,5, Sector - 2,
Sanpada, Navi Mumbai - 400 705.

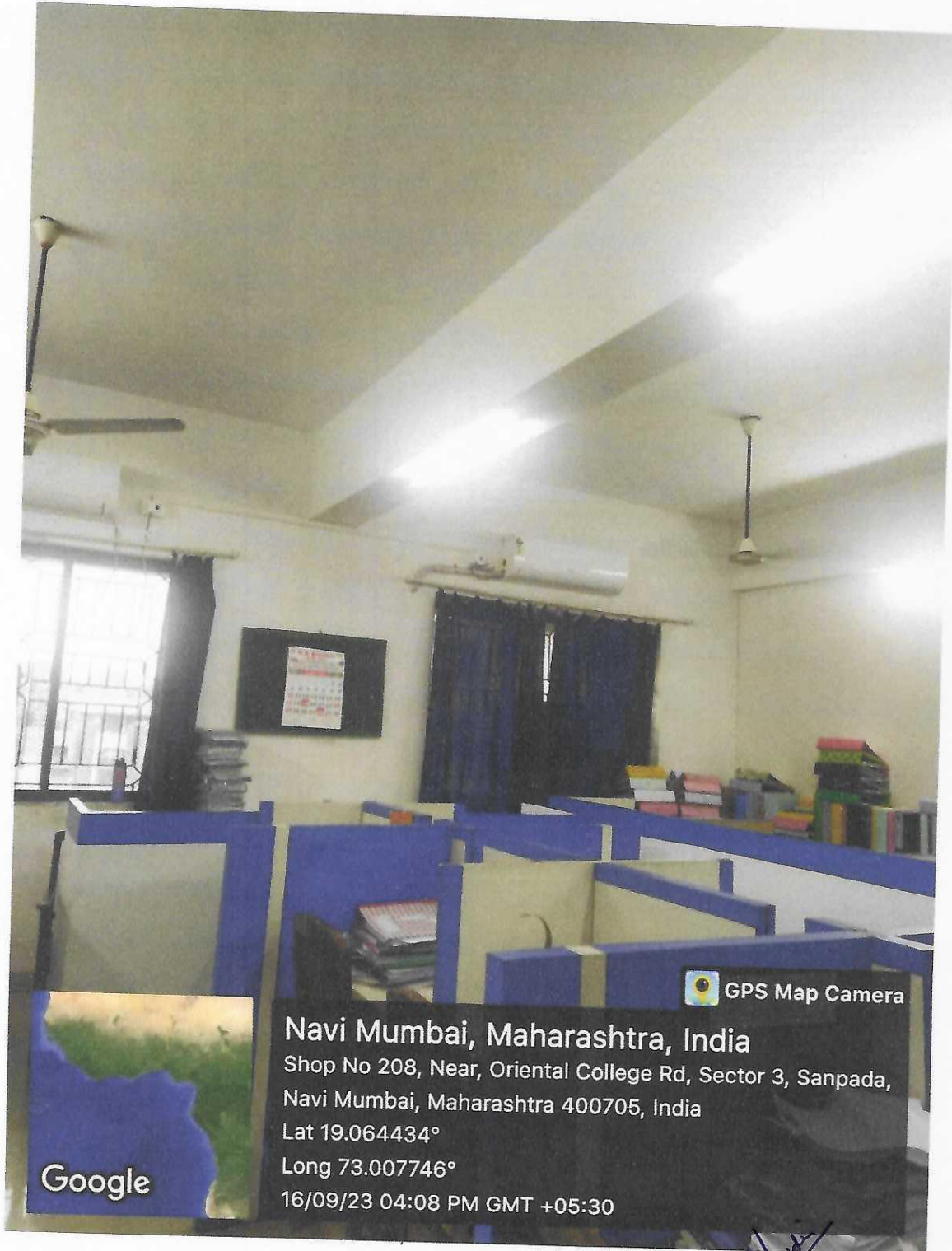


ORIENTAL COLLEGE OF LAW

MANAGED BY ORIENTAL EDUCATION SOCIETY

(Affiliated to University of Mumbai and Approved by Bar Council of India)
Aff-I/ICD/2014-15/1959- Bar Council: BCI: D: 793/2014 (L.E.)

- **LED Tube Lights in Staff Room**



[Signature]
PRINCIPAL

ORIENTAL COLLEGE OF LAW

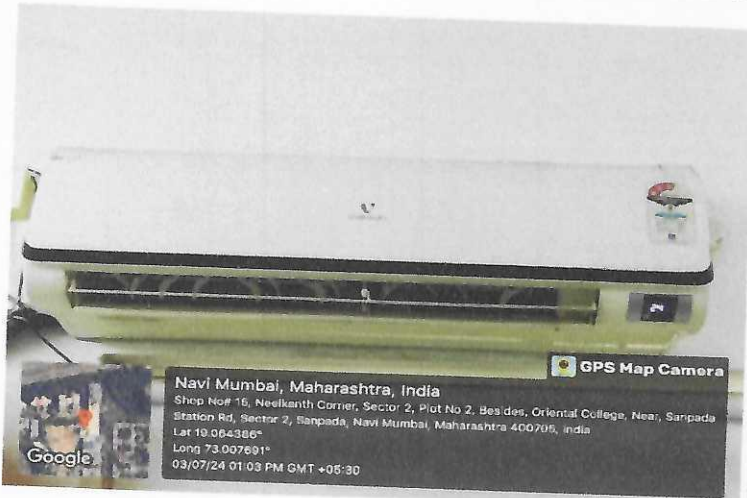
Plot No. 3,4,5, Sector - 2,
Sanpada, Navi Mumbai - 400 705.



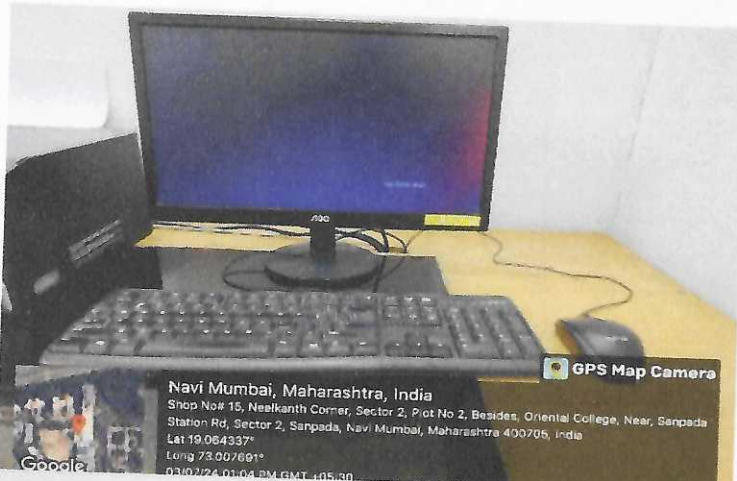
ORIENTAL COLLEGE OF LAW

MANAGED BY ORIENTAL EDUCATION SOCIETY

(Affiliated to University of Mumbai and Approved by Bar Council of India)
Aff-I/ICD/2014-15/1959- Bar Council: BCI: D: 793/2014 (L.E.)



Power efficient/Energy saving A.C.



Power efficient Computer system



Power efficient Printer

Adwait
PRINCIPAL
ORIENTAL COLLEGE OF LAW
Plot No. 3,4,5, Sector - 2,
Sanpada, Navi Mumbai - 400 705.



ORIENTAL COLLEGE OF LAW

MANAGED BY ORIENTAL EDUCATION SOCIETY

(Affiliated to University of Mumbai and Approved by Bar Council of India)
Aff-I/ICD/2014-15/1959- Bar Council: BCI: D: 793/2014 (L.E.)



Power efficient and ecofriendly water dispenser

R. S. Joshi
PRINCIPAL
ORIENTAL COLLEGE OF LAW
Plot No. 3,4,5, Sector - 2,
Sanpada, Navi Mumbai - 400 705.



ORIENTAL COLLEGE OF LAW

MANAGED BY ORIENTAL EDUCATION SOCIETY

(Affiliated to University of Mumbai and Approved by Bar Council of India)
Aff-I/ICD/2014-15/1959- Bar Council: BCI: D: 793/2014 (L.E.)

❖ Sensor based energy conservation



Sensor based Fire Safety system



[Signature]

PRINCIPAL
ORIENTAL COLLEGE OF LAW
Plot No. 3,4,5, Sector - 2,
Sanpada, Navi Mumbai - 400 705.



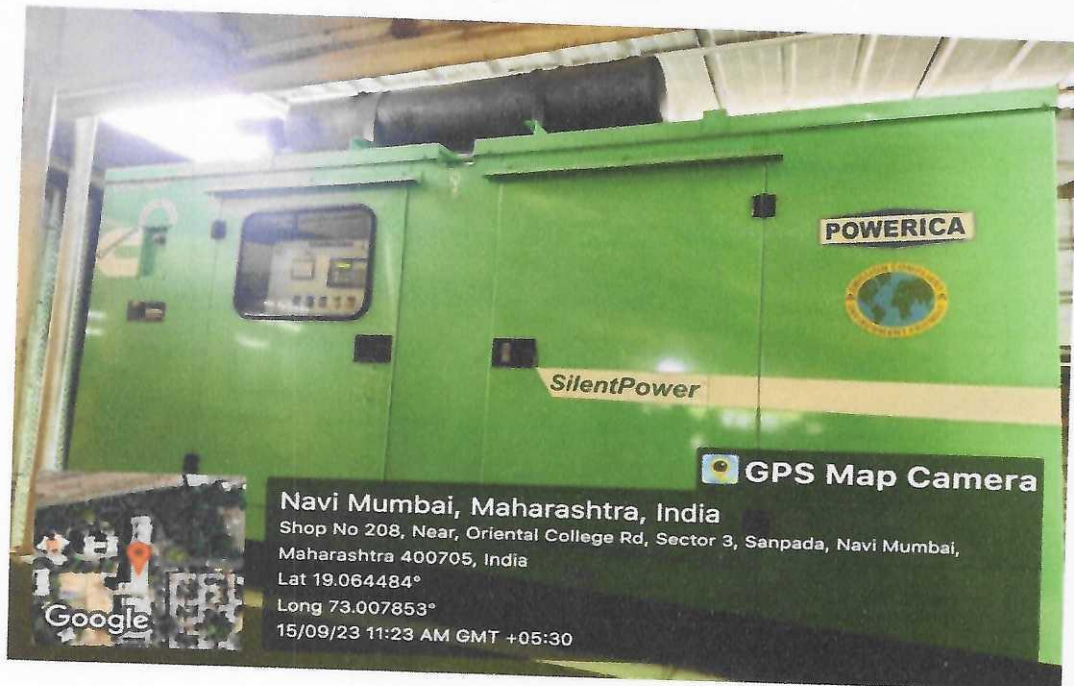
ORIENTAL COLLEGE OF LAW

MANAGED BY ORIENTAL EDUCATION SOCIETY

(Affiliated to University of Mumbai and Approved by Bar Council of India)
Aff-I/ICD/2014-15/1959- Bar Council: BCI: D: 793/2014 (L.E.)

❖ **Alternate Source of Energy**

- **Environmental Friendly Generator**



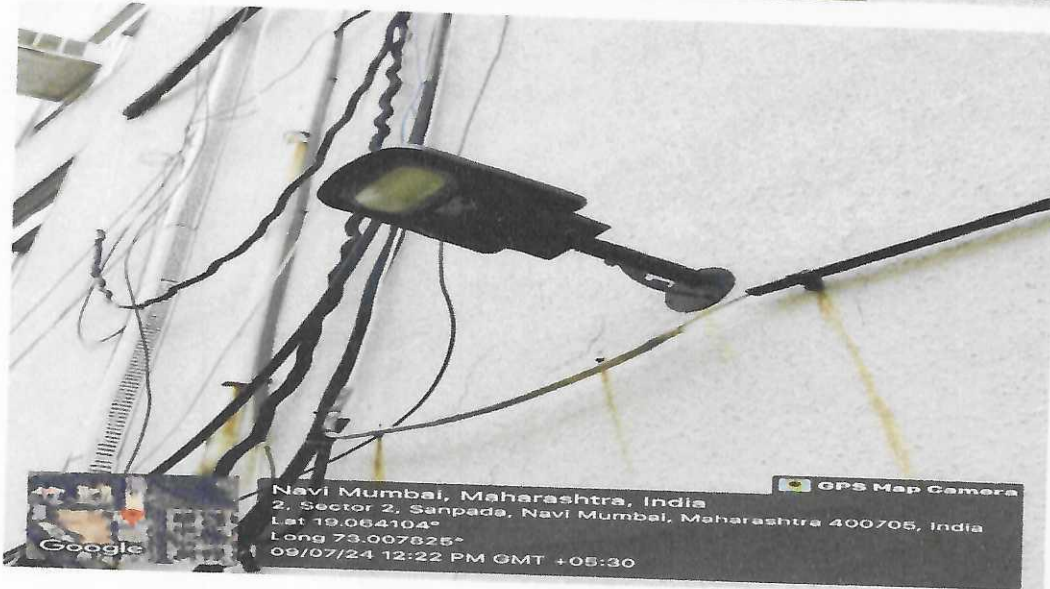
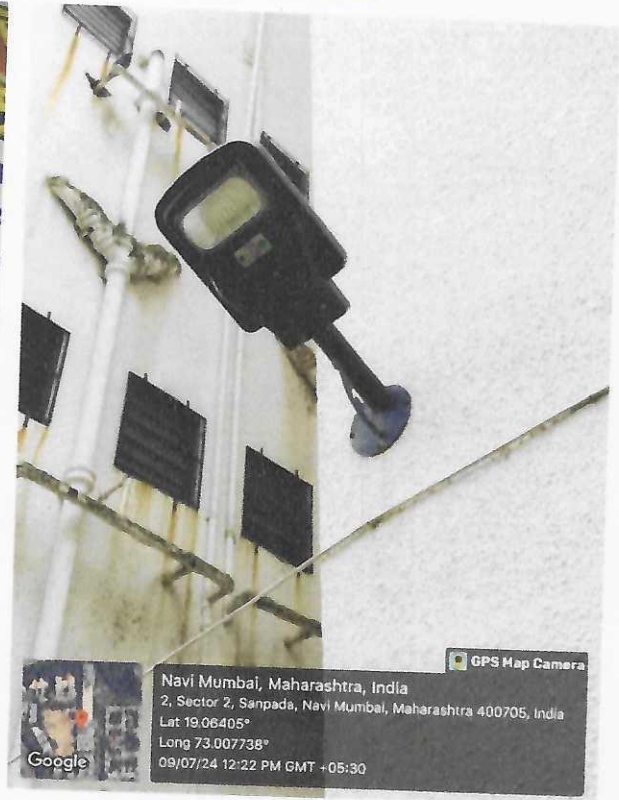
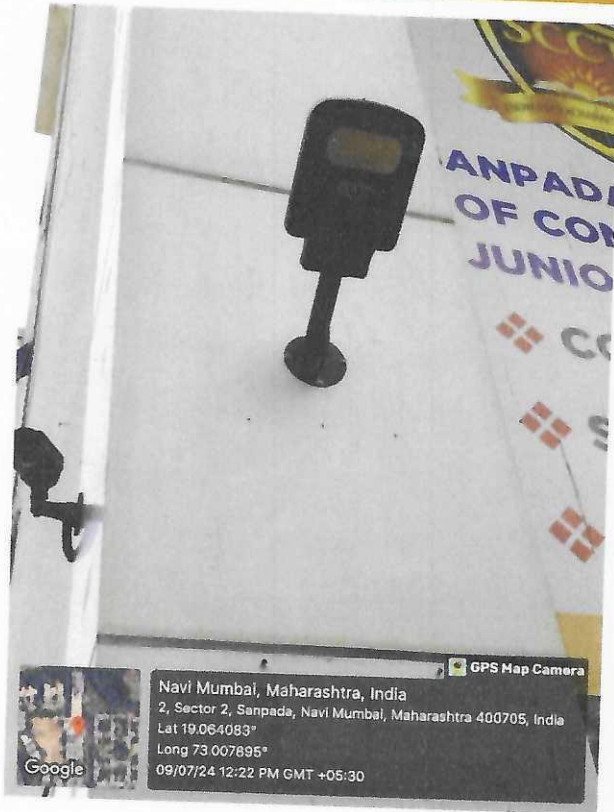


ORIENTAL COLLEGE OF LAW

MANAGED BY ORIENTAL EDUCATION SOCIETY

(Affiliated to University of Mumbai and Approved by Bar Council of India)
Aff-I/ICD/2014-15/1959- Bar Council: BCI: D: 793/2014 (L.E.)

❖ SOLAR ENERGY



Solar energy based street lights

Prudhvi
PRINCIPAL
ORIENTAL COLLEGE OF LAW
Plot No. 3,4,5, Sector - 2,
Sanpada, Navi Mumbai - 409 705.